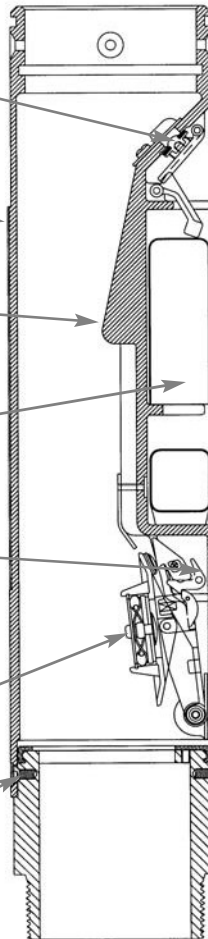


Overfill Prevention Valve

A1100 Guardian Overfill Prevention Valve

- **Drain Bleed Valve** for hose drainage, reduces unnecessary delays. Spring loaded and includes soft seat for positive seal
- **Protective Retainer** over floats for protection during installation, shipping and operation
- **Cast-in Dip Stick Diverters** permit stick gauging at any tank level without damage to internal parts
- **Vertical Slide Float Design** for protection during installation
- **Auto Relatch** prevents premature shut-off
- **Integrated Body Design** suitable for both dual point and coaxial drop tubes - one valve for all applications
- **Shock Relief Valve** incorporated to reduce line shock
- **Viton® O-Rings** at base of valve seals drop tube to valve to protect against leakage



The Emco Wheaton A1100 is a two stage overfill prevention valve for use in both dual point and coaxial drop tubes, gravity feed systems. Easily installs in a new or existing drop tube assembly for economical compliance with EPA regulations. Internal float design to eliminate any chance of the floats getting caught on tank walls or the riser pipe as well as to prevent float damage during installation. Stick diverter and automatic spring loaded poppet retract from the flow path when the valve is not in operation, allowing for stick gauging at any tank level. Compatible with all standard fuels. Special variants are available for most bulk chemical applications.

Material

Body: Aluminum
 Floats: HDPE
 Seals: Viton®

Viton® is a registered trademark of Dupont Dow Elastomers.

Specifications

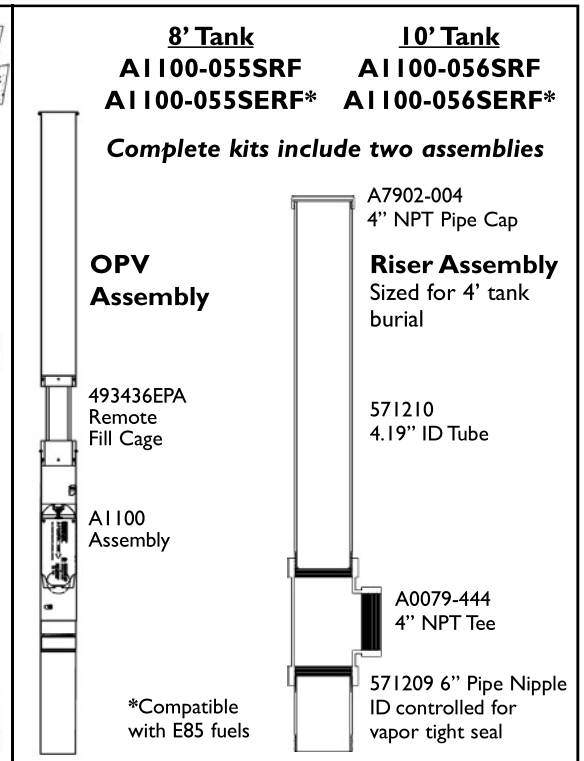
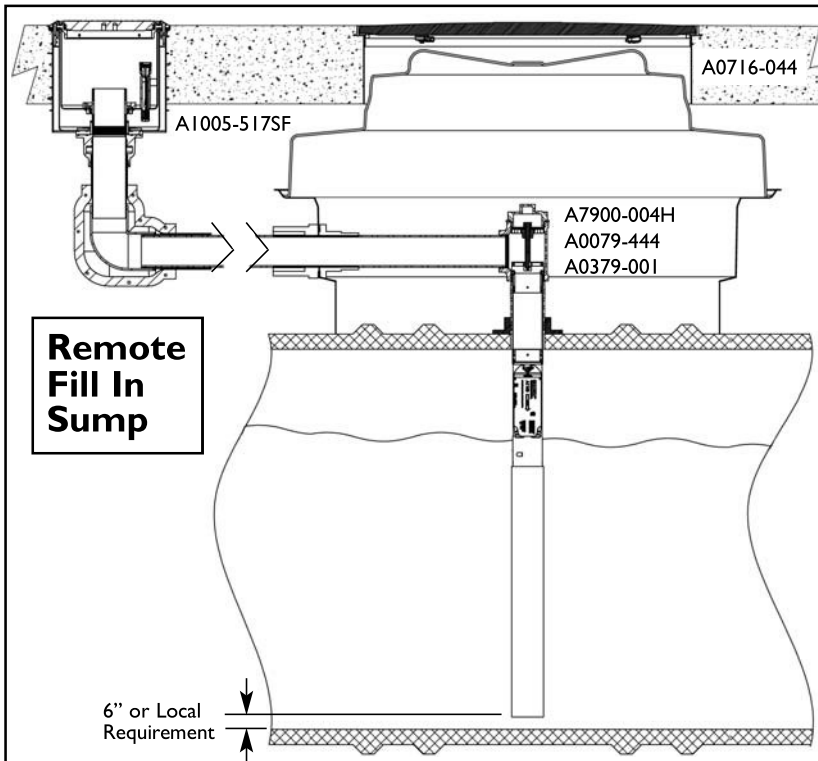
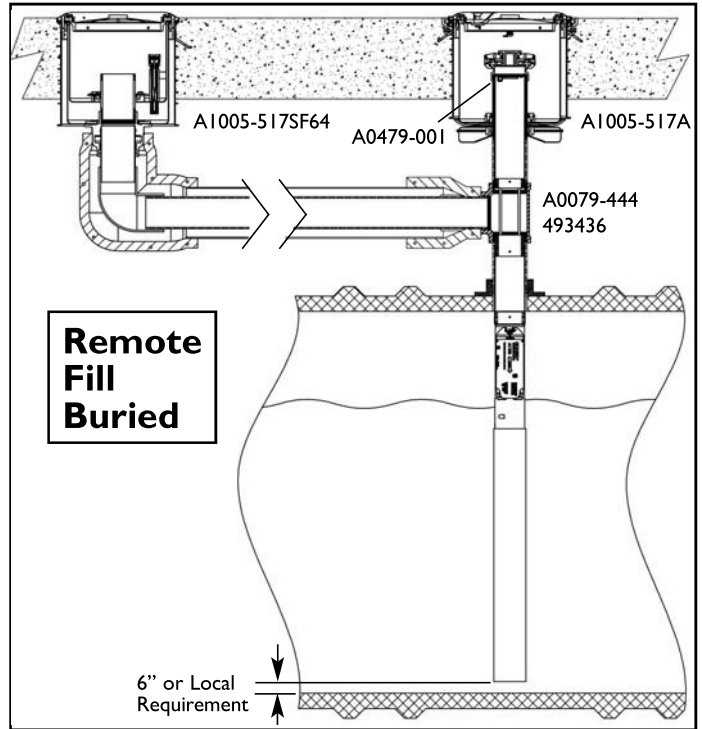
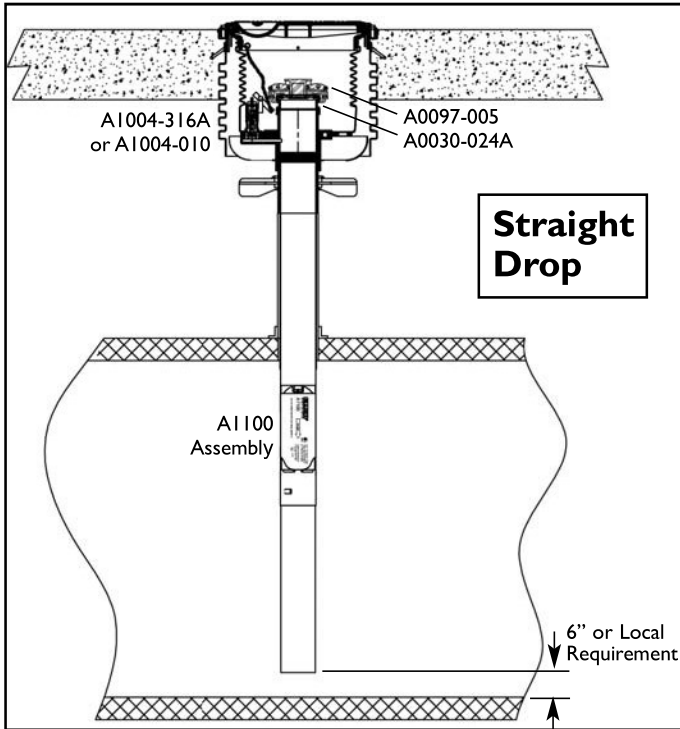
Weight: 5.2 lbs.
 Diameter: 3.76"
 Length: 18.0"

Approvals

CARB Approval	99-8
ULC	MH21164
ATEX	FTZU98EX0733
Florida DEP	EQ-414

Overfill Prevention Valve

A1100 Guardian Overfill Prevention Systems



A7900-004H
4" NPSM Male Pipe Plug without o-ring



A0379-001
Remote Fill Cage Adjustable NPSM



A0079-444
Tee 4"x4"x4"



A0479-001
Dip Stick Port



A0081-006JP
Remote Fill Piping Test Assembly

Overfill Prevention Valve

AI100 Guardian Dual Point Overfill Prevention Systems

All assemblies are factory welded; bottom tube screws to top tube/valve assembly. No Epoxy

Assemblies are vapor tight and meet the EPA 40 CFR Part 63 requirements.

All standard AI100 variants are acceptable for use with up to E25 ethanol blend gasoline and B20 Biodiesel blends. Higher percentage ethanol or biodiesel require use of the “E” variant.

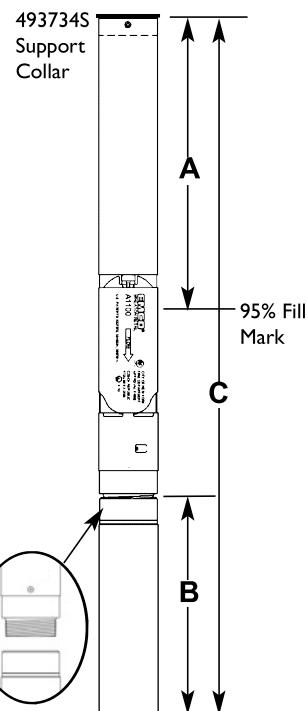
Model No.	Description
493192	Kit, Assembly Valve to Tube
493436	Remote Fill Kit
493734S	Support Collar
566675	Drill Fixture
571814	Drill Fixture, Remote Fill Assemblies
A0379-001	Remote Fill Cage Adjustable NPSM
A0379-101	Remote Fill Cage Adjustable BSPP



566675 Drill Fixture
Aligns holes for drilling to ensure vapor-tight seal



571814 Drill Fixture
For remote fill applications



Model No.	Description	Upper Length A	Lower Length B	Overall Length C	Max. Burial Depth	Nominal Tank Dia.	Weight
AI100-010	Valve Only	N/A	N/A	N/A	N/A	N/A	5.2 lbs.
AI100-010E	Valve Only E85	N/A	N/A	N/A	N/A	N/A	5.7 lbs.
AI100-011	Valve Only Remote Fill Export	N/A	N/A	N/A	N/A	N/A	5.0 lbs.
AI100-054S	Remote Fill Export	50"	100"	162"	N/A	N/A	28.5 lbs.
AI100-054SC	Remote Fill w/Cage BSPT Export	50"	100"	158"	N/A	N/A	27.9 lbs.
AI100-054SCN	Remote Fill w/Cage NPT	50"	100"	162"	N/A	N/A	25.0 lbs.
AI100-055SRF	Remote Fill Assembly and Kit	73"	83"	168"	4.0**	8'	64.3 lbs.
AI100-056SRF	Remote Fill Assembly and Kit	85"	95"	192"	4.0**	10'	66.5 lbs.
AI100-053S	Dual Pt Screw Together	60"	50"	122"	5.0'	6'	22.1 lbs.
AI100-055S	Dual Pt Screw Together	73"	83"	168"	6.0'	8'	25.2 lbs.
AI100EVR-055	Dual Pt Screw Together Phase I EVR	73"	83"	168"	6.0'	8'	25.2 lbs.
AI100-056SE	Dual Pt Screw Together E85	85"	95"	192"	7.0'	10'	27.4 lbs.
AI100-056S	Dual Pt Screw Together	85"	95"	192"	7.0'	10'	27.2 lbs.
AI100EVR-056	Dual Pt Screw Together Phase I EVR	85"	95"	192"	7.0'	10'	27.2 lbs.
AI100-057S	Dual Pt Screw Together	85"	121"	218"	6.8'	12'	30.3 lbs.
AI100EVR-057	Dual Pt Screw Together Phase I EVR	85"	121"	218"	6.8'	12'	30.3 lbs.
AI100EVR-057E	Dual Pt Screw Tgthr Phase I EVR, E85	85"	121"	218"	6.8'	12'	30.5 lbs.
AI100-058S	Dual Pt Screw Together	123"	121"	256"	10.0'	12'	31.0 lbs.
AI100EVR-058	Dual Pt Screw Together Phase I EVR	123"	121"	256"	10.0'	12'	31.0 lbs.

The AI100 Overfill Prevention Valve is not recommended for tanks under 6' in diameter.

Lengths A and B are measured from the shut-off point. Maximum burial depth assumes 95% shut-off and 6" clearance between top of drop tube and inside bottom of containment manhole lid.

***SRF variants are designed for precise burial depth of 46"-54"; tank top access required.** For additional applications and installation instructions, call Customer Service at 800-234-4394.

Custom lengths available. OPV systems can be ordered as a package with a fill cap and fill adapter. Contact Customer Service for ordering information.

Overfill Prevention Valve

A1100 Guardian Coaxial Overfill Prevention Systems

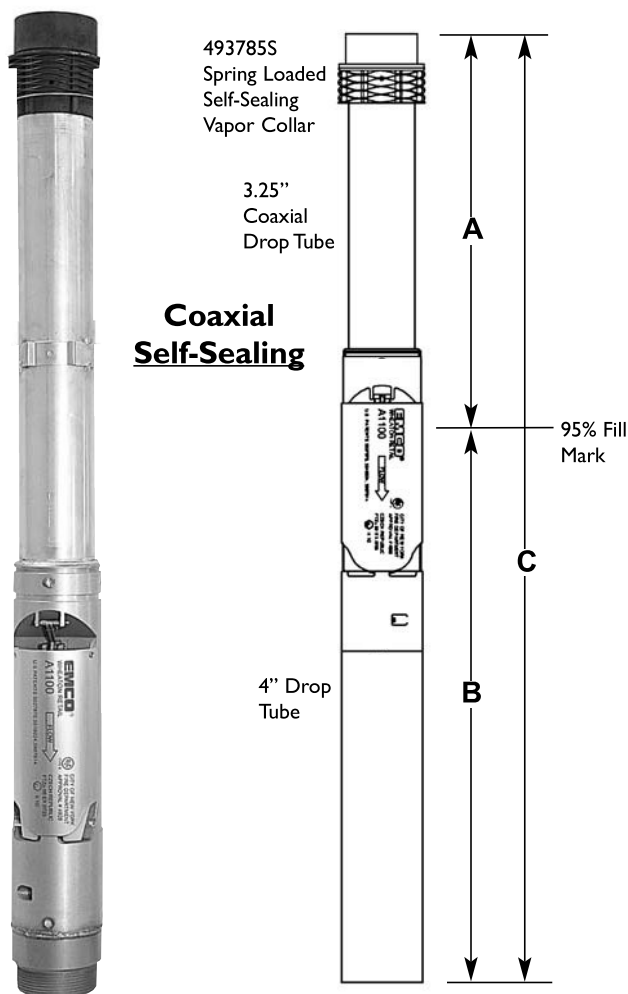
The Emco A1100-08X assemblies are factory welded; bottom tube screws to top tube/valve assembly. No Epoxy. These assemblies are vapor tight and meet the EPA 40 CFR Part 63 requirements.

The Emco A1100-08X series is the only Coaxial Overfill Prevention Valve that will pass the Pressure Decay Test (CARB TP201). Note: must be used with the Emco A0089-001 Fill Adapter.

All standard A1100 variants are acceptable for use with up to E25 ethanol blend gasoline and B20 Biodiesel blends. Higher percentage ethanol or biodiesel require use of the “E” variant.

Accessories:

Model No.	Description
493785S	Spring-loaded Self-sealing Vapor Collar
A0089-001	Fill Adapter for A1100-08X series
A0096-001	Fill Adapter for A1100-06X series



Model No.	Coaxial Screw Together	Upper Length A	Lower Length B	Overall Length C	Max. Burial Depth	Nominal Tank Dia.	Weight
A1100-065S*	Coaxial Screw Together	67.5"	95"	163"	5.6'	8'	21.9 lbs.
A1100-066S*	Coaxial Screw Together	67.5"	107"	175"	5.5'	10'	24.7 lbs.
A1100-067S*	Coaxial Screw Together	67.5"	133"	201"	5.3'	12'	22.5 lbs.
A1100-067E*	Coaxial Screw Together E85	67.5"	133"	201"	5.3'	12'	22.5 lbs.
A1100-085S	Coaxial Self-Sealing Screw Together	67.5"	95"	163"	5.4'	8'	23.0 lbs.
A1100-086S	Coaxial Self-Sealing Screw Together	67.5"	107"	175"	5.3'	10'	26.3 lbs.
A1100-087S	Coaxial Self-Sealing Screw Together	67.5"	133"	201"	5.1'	12'	28.0 lbs.
A1100-087E	Coaxial Self-Sealing Screw Together E85	67.5"	133"	201"	5.1'	12'	28.0 lbs.

OPV systems can be ordered as a package with a fill cap and fill adapter. Contact Customer Service at 800-234-4394 for ordering information.

The A1100 Overfill Prevention Valve is not recommended for tanks under 6' in diameter.

Custom lengths available: Please contact our Customer Service Department.

Lengths A and B are measured from the shut-off point. Maximum burial depth assumes 95% shut-off and 6" clearance between top of drop tube and inside bottom of containment manhole lid.

*The A1100-06x series are non-poppeted and will not pass the pressure decay test. The -06X series must be used with the Emco A0096-001 Fill Adapter.